

Standard Colors

SILICONIZED POLYESTER

Polar White is a Straight Polyester.

- Final color selection should be made from actual color chips.
- For the most current information available, visit our website at www.dbci.com.
- Most colors have a 30-year film integrity limited warranty. Numbers located below the actual color chip denote the number of years the color is warranted against chalking or fading. Polar White and Glossy White do not have a chalk and fade warranty.

*Indicates a 10-year film integrity limited warranty.

- † This paint contains more than 0.06 percent lead and, under 13 CFR 1303, should only be used for applications which comply with federal, state and local regulations for lead-containing paint.



POLAR WHITE



† *FERN GREEN-10



GALLERY BLUE-25



RUSTIC RED-25



IVY GREEN-25



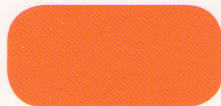
GLOSSY WHITE



HAWAIIAN BLUE-25



LIGHT STONE-25



† *SUNSET ORANGE-10



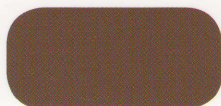
SADDLE TAN-25



SILHOUETTE GRAY-25



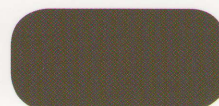
EVERGREEN-10



KOKO BROWN-25



† *PATRIOT RED-5



BURNISHED SLATE-25

* Final color selection should be made from actual color chips.

Non-Standard Colors

SILICONIZED POLYESTER

- Non-Standard Colors may require extended lead time.
- Color matching is also available for sizable orders.
- Final color selection should be made from actual color chips.
- For the most current information available, visit our website at www.dbci.com.
- Most colors have a 30-year film integrity limited warranty. Numbers located below the actual color chip denote the number of years the color is warranted against chalking or fading.

*Indicates a 10-year film integrity limited warranty.

- † This paint contains more than 0.06 percent lead and, under 13 CFR 1303, should only be used for applications which comply with federal, state and local regulations for lead-containing paint.



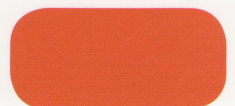
MARINE GREEN-10



† *SAFETY YELLOW-10



TEAL-10



† *TANGERINE-10



† *DARK TEAL-10



MAROON-5



† *CRIMSON RED-3



Integrity. Partnership. Quality.